

Brainomix 360

Stroke

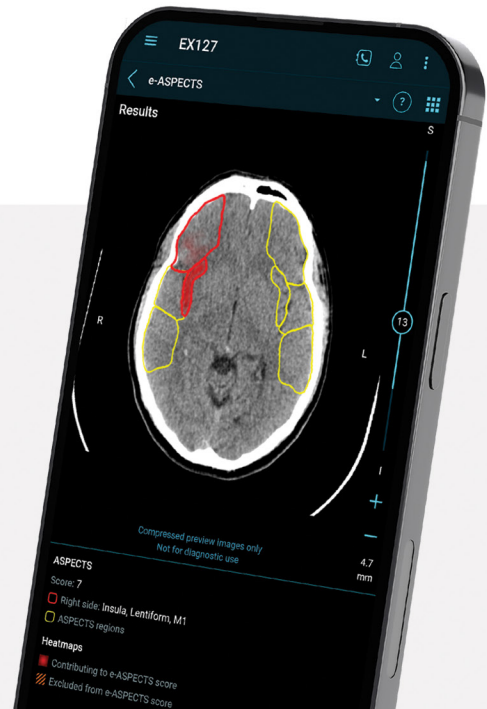
THE NEXT GENERATION OF STROKE AI IMAGING



CUTTING-EDGE TECHNOLOGY

The Brainomix 360 platform is a collection of **CE-marked** devices using our state-of-the-art AI algorithms to support doctors by providing real-time interpretation of brain scans to aid treatment and transfer decisions for stroke patients, with an aim towards enabling more patients to receive the right treatment, in the right place, at the right time.

Our proprietary e-ASPECTS module can detect and measure both Large Vessel Occlusion (LVO) and hyperdense volumes (which may indicate bleeding), automatically assess infarct volume and assess ASPECTS score in non-contrast CT images, with a unique overlaid heatmap for a more nuanced assessment.

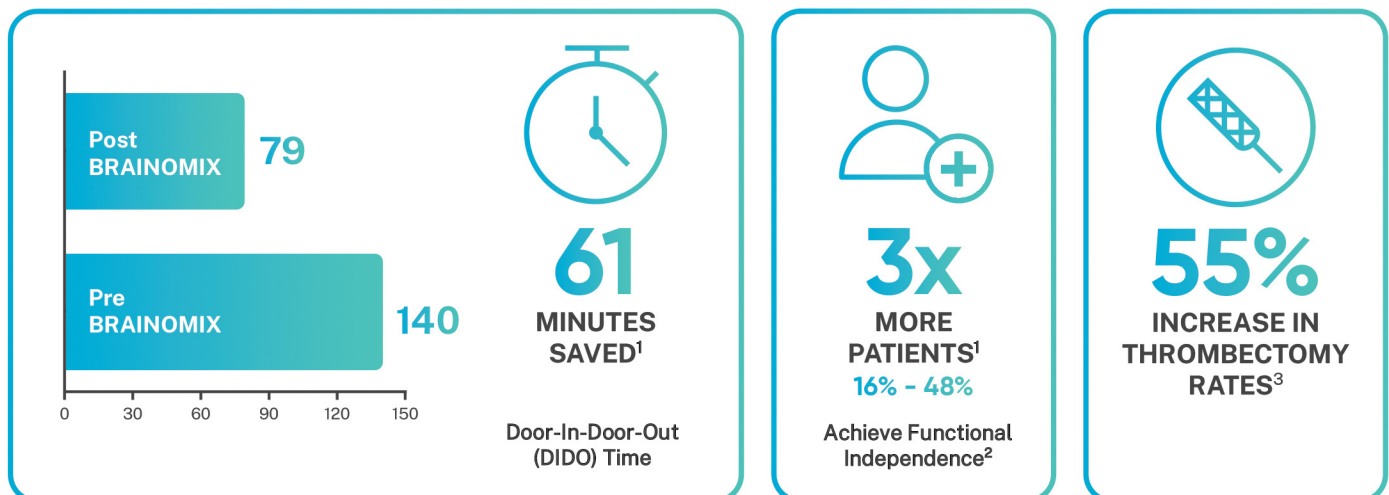


TRANSFORMING TREATMENT

Born in Oxford, Brainomix 360 was designed from a heritage of academic and scientific excellence, with now more than 60 publications demonstrating the value and impact of our transformative technologies.

The Brainomix 360 platform has been shown worldwide to:

- **ENABLE FASTER TREATMENT**
- **EXPAND PATIENT ACCESS TO THROMBOLYSIS AND THROMBECTOMY**
- **IMPROVE OUTCOMES**



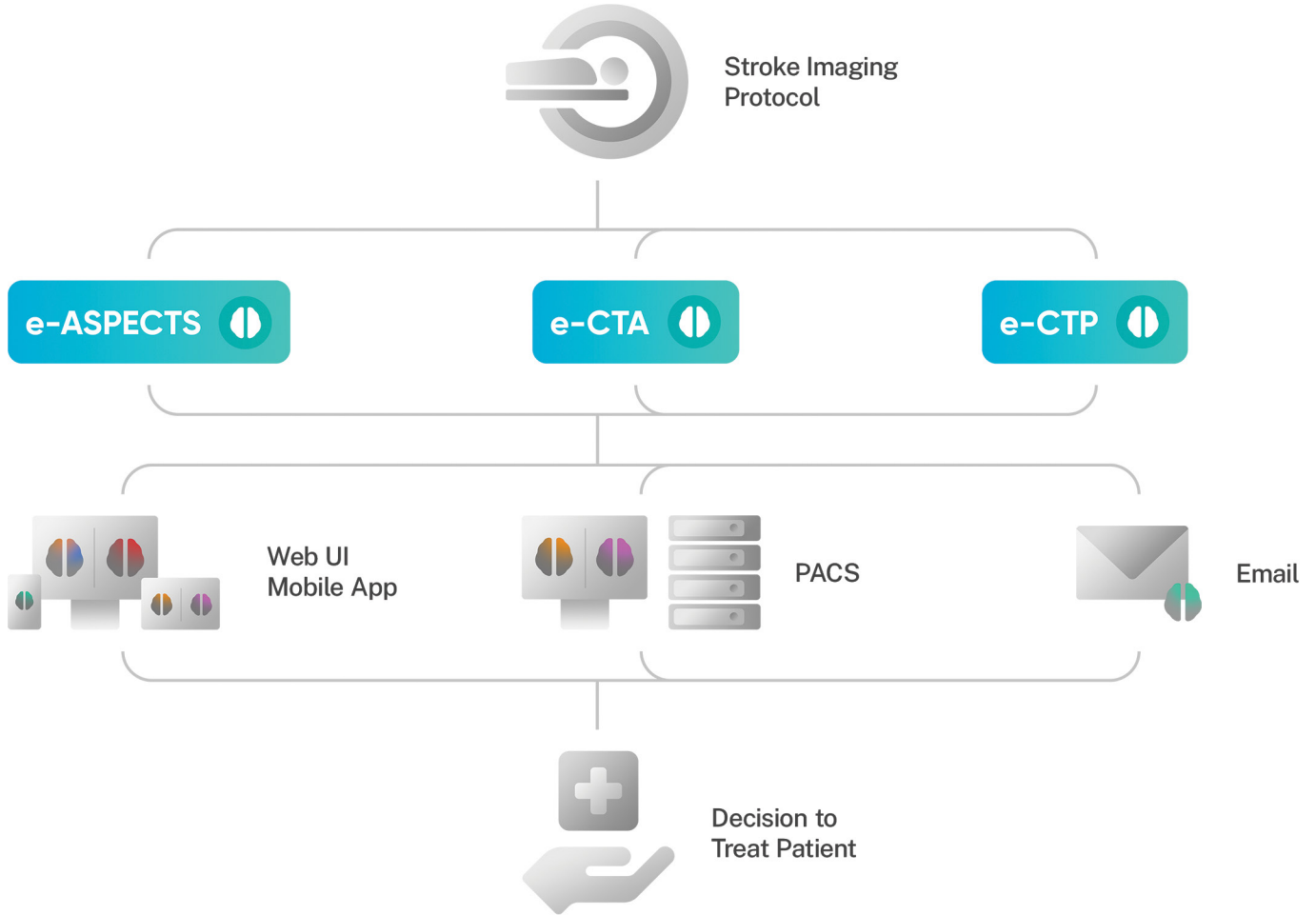
¹ Nagaratnam et al. Int J Stroke. 2021;16:28-29

² Defined as mRS 0-2 @ 90 days

³ Independent report by Oxford AHSN, in press

DELIVERING FULL NETWORK SOLUTIONS

Brainomix 360 is a comprehensive platform designed to support clinicians and their imaging-based treatment decisions at all points across the stroke pathway, from simple imaging to more advanced imaging.



CONNECTING NETWORKS TO FACILITATE FASTER TREATMENT

The **Brainomix 360 Mobile App** allows clinicians to quickly and securely access, preview and share images and patient data across a network, send messages, make calls and enhance collaboration for patient care – all designed to optimize workflow, facilitating faster transfer and treatment decisions.

The **Trials Tracker** automatically assesses patient inclusion/exclusion against landmark trial criteria, while also allowing for customization to support on-going prospective trials.





**ESTABLISHED HEALTH TECH LEADERS
WITH NATIONAL AND SUPRA-REGIONAL
DEPLOYMENTS ACROSS
30+ COUNTRIES WORLDWIDE**



GLOBAL EXPERTISE, LOCAL SUPPORT

Since launching as a spin-out from the University of Oxford, **Brainomix** have developed **award-winning AI-powered** imaging biomarkers, assisting physicians across the world to make better life-saving decisions.

Our dedicated field operations team works closely with each hospital to deliver ongoing support, including installation and training, while also working to drive wider adoption of the technology.

We invite you to see a demonstration of Brainomix 360.

To find out how Brainomix 360 can benefit you and your patients, visit our website or contact us:

Brainomix Ltd, UK Head Office:
Seacourt Tower, 1st Floor, East Wing,
West Way, Botley, Oxford OX2 0JJ
+44 (0) 1865 582 730

Brainomix Europe:
Suite 10380,
26-27 Pembroke Street Upper,
Dublin 2 D02 X36, Ireland
+353 1 636 3150

✉ info@brainomix.com



www.brainomix.com